

FOUNDATIONS SERIES



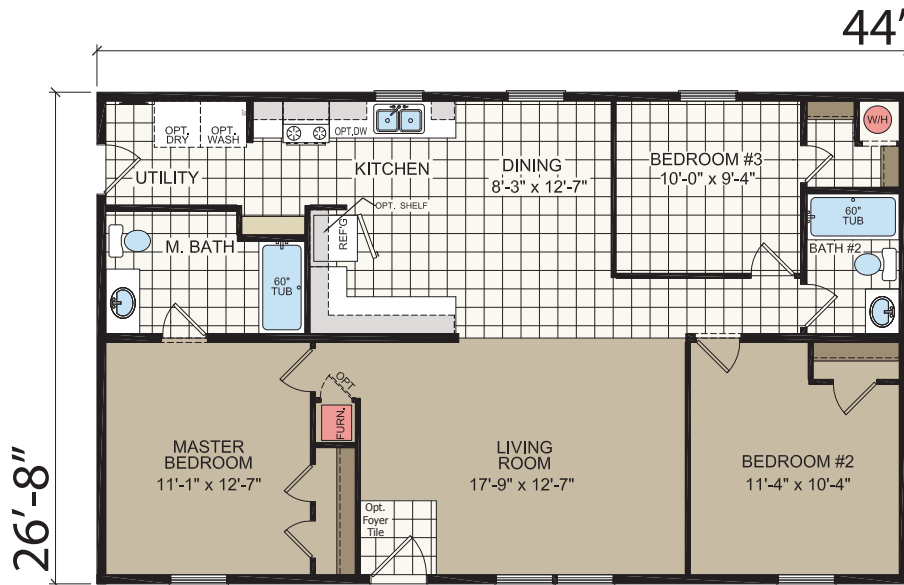
ATLANTIC[®]
HOMES

FOUNDATIONS

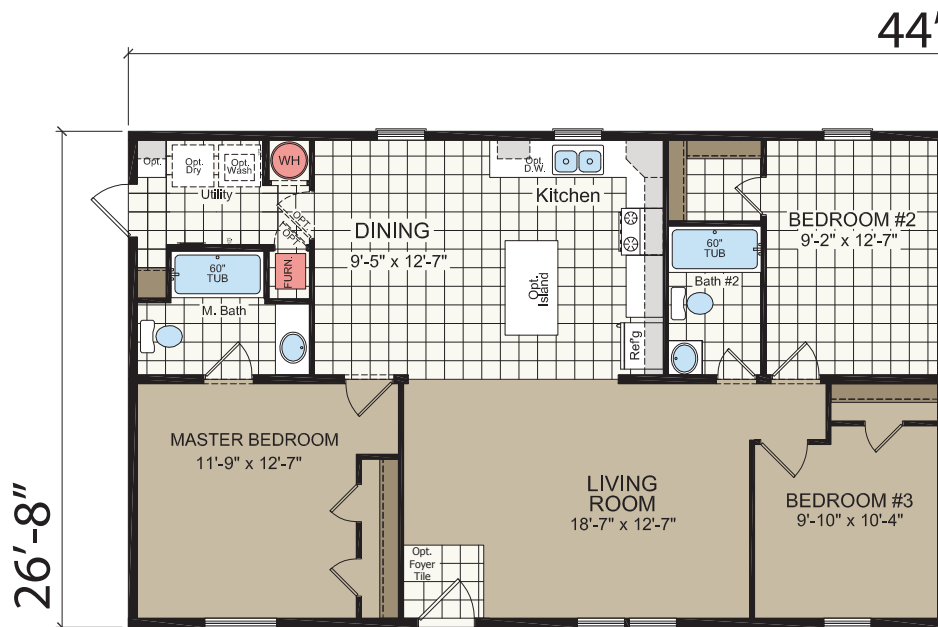
34425

3 bed-2 bath
1173 sq. ft.

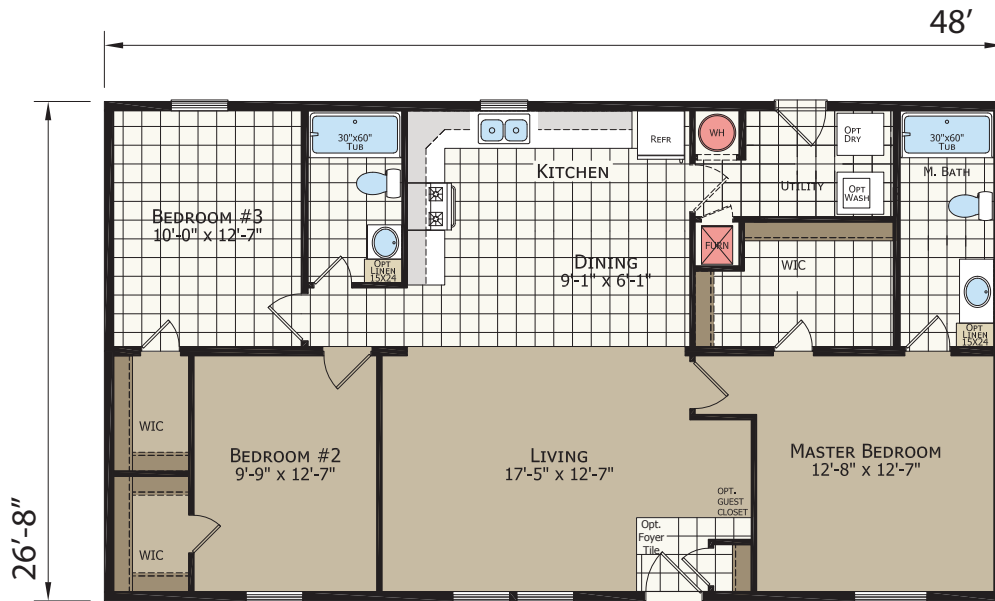
ATLANTIC[®]
HOMES



STANDARD FEATURES	VOG	Drywall		VOG	Drywall
2x4 Exterior Wall with R-11	•		6-Panel Steel Front Door	•	
I-Beam with Removable Hitch	•	•	Sunburst Fiberglass Front Door		•
2x6 Floor Joist 16" O.C.	•	•	9-Lite Rear Door	•	•
R-11 Floor / R-22 Roof Insulation	•	•	2-Panel Arch Top Interior Doors with Knobs	•	•
Tongue & Groove OSB Floor Decking	•	•	Non Low-E Vinyl Window – No Grids	•	
8' Sidewalls with Flat Textured Ceiling	•	•	Low-E Gridded Vinyl Windows		•
2x6 Sidewalls 16" O.C.		•	100 Amp (Single-Section) 200 Amp (Multi-Section)	•	•
20# Roof Load	•	•	Exterior GFI	•	•
Nominal 3/12 Roof Pitch	•	•	Metal Furnace Door		•
3-Tab Shingled Roof	•	•	Thermostat	•	
Dutchlap Siding	•	•	Programable Thermostat		•
Shutters on Front Door Side (Multi-Section Only)	•	•	Smoke Detector – Per Code	•	•
Vented Closet Shelves	•	•	White Exterior Lights		•
056A Gas Furnace		•	(1) Bulb Light Fixtures	•	•
15kw Electric Furnace	•		Switched Receptacles in Living Room & Bedrooms	•	•
Inline Heat Registers	•	•	60" 1-Piece Tub	•	•
Thermo-Brace [®] (OPT. 7/16 OSB Backer)		•	Stainless Steel Sink	•	
Tape & Texture Drywall Throughout		•	Round Front Toilet	•	•
Raised Panel Shutters		•	Bath Vanity Mirrors	•	•
2-5/8" Ceiling Cove 2-3/4" Base 2" Interior Trim		•	Vent Fan Without Light	•	•
30-Gallon Water Heater	•	•	Wood Shaker Cabinets – Hardwood Stile		•
Plumb for Washer / Wire for Dryer	•	•	MDF Shaker Cabinets with MDF Stile No Hardware	•	
Linoleum Throughout (Single-Sections)	•	•	Bank of Drawers at Kitchen	•	•
Electric Range	•		Factory Select Interior Colors	•	
Self-Clean Gas Range		•	36" Vanity Height - Porcelain Sinks		•
Range Hood	•	•	8" Stainless Steel Sink		•
18 Cu. Ft. Refrigerator	•	•	Adjustable Overhead Shelf		•



STANDARD FEATURES	VOG	Drywall		VOG	Drywall
2x4 Exterior Wall with R-11	•		6-Panel Steel Front Door	•	
I-Beam with Removable Hitch	•	•	Sunburst Fiberglass Front Door		•
2x6 Floor Joist 16" O.C.	•	•	9-Lite Rear Door	•	•
R-11 Floor / R-22 Roof Insulation	•	•	2-Panel Arch Top Interior Doors with Knobs	•	•
Tongue & Groove OSB Floor Decking	•	•	Non Low-E Vinyl Window – No Grids	•	
8' Sidewalls with Flat Textured Ceiling	•	•	Low-E Gridded Vinyl Windows		•
2x6 Sidewalls 16" O.C.		•	100 Amp (Single-Section) 200 Amp (Multi-Section)	•	•
20# Roof Load	•	•	Exterior GFI	•	•
Nominal 3/12 Roof Pitch	•	•	Metal Furnace Door		•
3-Tab Shingled Roof	•	•	Thermostat	•	
Dutchlap Siding	•	•	Programable Thermostat		•
Shutters on Front Door Side (Multi-Section Only)	•	•	Smoke Detector – Per Code	•	•
Vented Closet Shelves	•	•	White Exterior Lights		•
056A Gas Furnace		•	(1) Bulb Light Fixtures	•	•
15kw Electric Furnace	•		Switched Receptacles in Living Room & Bedrooms	•	•
Inline Heat Registers	•	•	60" 1-Piece Tub	•	•
Thermo-Brace [®] (OPT. 7/16 OSB Backer)		•	Stainless Steel Sink	•	
Tape & Texture Drywall Throughout		•	Round Front Toilet	•	•
Raised Panel Shutters		•	Bath Vanity Mirrors	•	•
2-5/8" Ceiling Cove 2-3/4" Base 2" Interior Trim		•	Vent Fan Without Light	•	•
30-Gallon Water Heater	•	•	Wood Shaker Cabinets – Hardwood Stile		•
Plumb for Washer / Wire for Dryer	•	•	MDF Shaker Cabinets with MDF Stile No Hardware	•	
Linoleum Throughout (Single-Sections)	•	•	Bank of Drawers at Kitchen	•	•
Electric Range	•		Factory Select Interior Colors	•	
Self-Clean Gas Range		•	36" Vanity Height - Porcelain Sinks		•
Range Hood	•	•	8" Stainless Steel Sink		•
18 Cu. Ft. Refrigerator	•	•	Adjustable Overhead Shelf		•



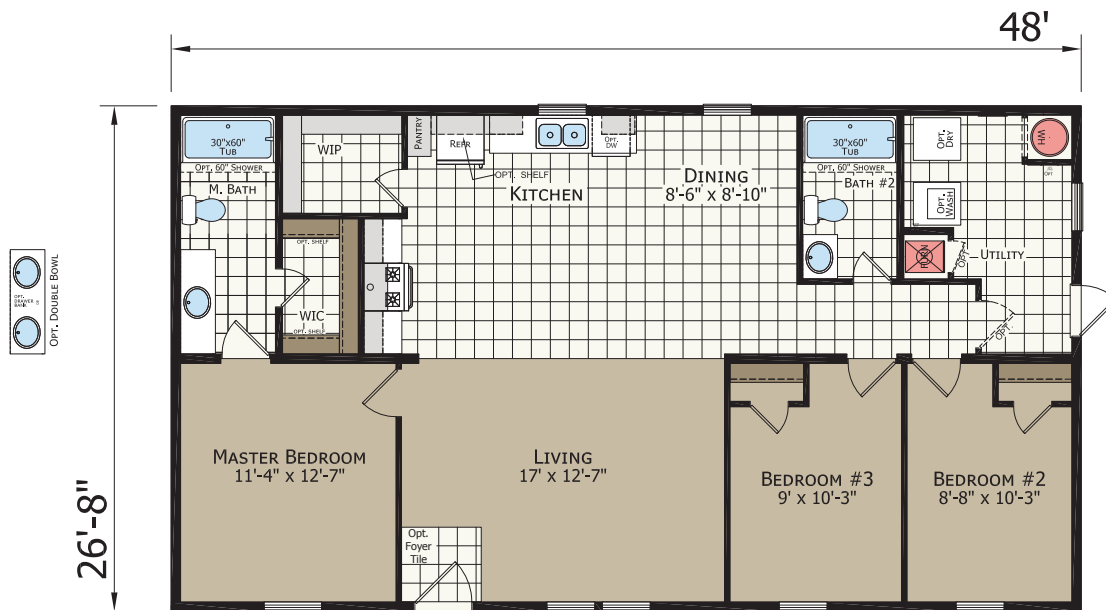
STANDARD FEATURES	VOG	Drywall		VOG	Drywall
2x4 Exterior Wall with R-11	•		6-Panel Steel Front Door	•	
I-Beam with Removable Hitch	•	•	Sunburst Fiberglass Front Door		•
2x6 Floor Joist 16" O.C.	•	•	9-Lite Rear Door	•	•
R-11 Floor / R-22 Roof Insulation	•	•	2-Panel Arch Top Interior Doors with Knobs	•	•
Tongue & Groove OSB Floor Decking	•	•	Non Low-E Vinyl Window – No Grids	•	
8' Sidewalls with Flat Textured Ceiling	•	•	Low-E Gridded Vinyl Windows		•
2x6 Sidewalls 16" O.C.		•	100 Amp (Single-Section) 200 Amp (Multi-Section)	•	•
20# Roof Load	•	•	Exterior GFI	•	•
Nominal 3/12 Roof Pitch	•	•	Metal Furnace Door		•
3-Tab Shingled Roof	•	•	Thermostat	•	
Dutchlap Siding	•	•	Programable Thermostat		•
Shutters on Front Door Side (Multi-Section Only)	•	•	Smoke Detector – Per Code	•	•
Vented Closet Shelves	•	•	White Exterior Lights		•
056A Gas Furnace		•	(1) Bulb Light Fixtures	•	•
15kw Electric Furnace	•		Switched Receptacles in Living Room & Bedrooms	•	•
Inline Heat Registers	•	•	60" 1-Piece Tub	•	•
Thermo-Brace [®] (OPT. 7/16 OSB Backer)		•	Stainless Steel Sink	•	
Tape & Texture Drywall Throughout		•	Round Front Toilet	•	•
Raised Panel Shutters		•	Bath Vanity Mirrors	•	•
2-5/8" Ceiling Cove 2-3/4" Base 2" Interior Trim		•	Vent Fan Without Light	•	•
30-Gallon Water Heater	•	•	Wood Shaker Cabinets – Hardwood Stile		•
Plumb for Washer / Wire for Dryer	•	•	MDF Shaker Cabinets with MDF Stile No Hardware	•	
Linoleum Throughout (Single-Sections)	•	•	Bank of Drawers at Kitchen	•	•
Electric Range	•		Factory Select Interior Colors	•	
Self-Clean Gas Range		•	36" Vanity Height - Porcelain Sinks		•
Range Hood	•	•	8" Stainless Steel Sink		•
18 Cu. Ft. Refrigerator	•	•	Adjustable Overhead Shelf		•

FOUNDATIONS

34826-48'

3 bed-2 bath
1280 sq. ft.

ATLANTIC[®]
HOMES



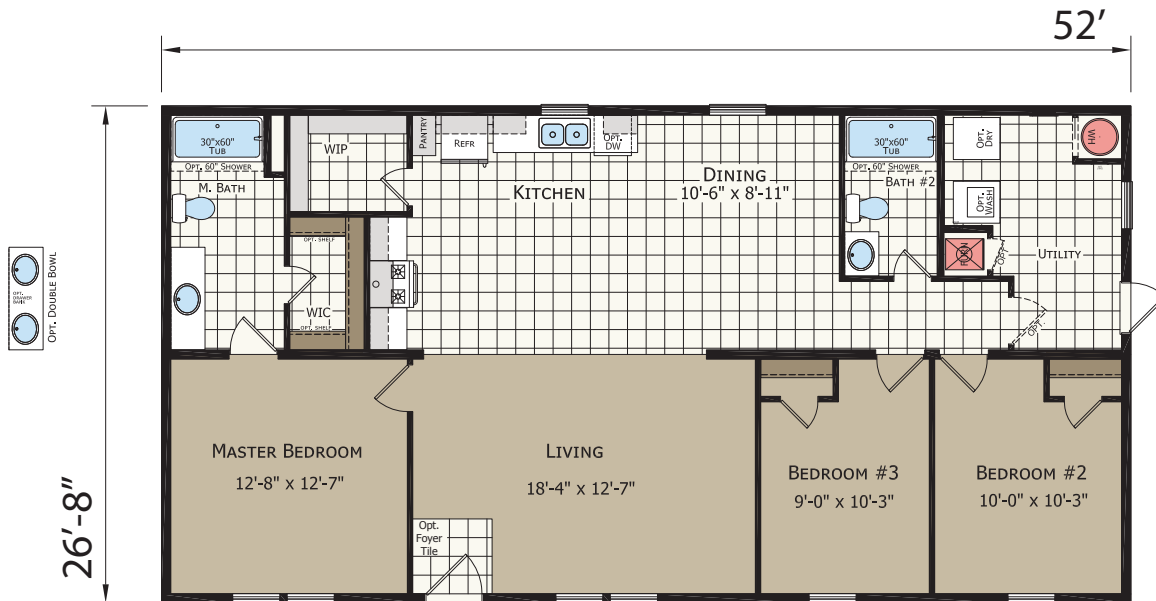
STANDARD FEATURES	VOG	Drywall		VOG	Drywall
2x4 Exterior Wall with R-11	•		6-Panel Steel Front Door	•	
I-Beam with Removable Hitch	•	•	Sunburst Fiberglass Front Door		•
2x6 Floor Joist 16" O.C.	•	•	9-Lite Rear Door	•	•
R-11 Floor / R-22 Roof Insulation	•	•	2-Panel Arch Top Interior Doors with Knobs	•	•
Tongue & Groove OSB Floor Decking	•	•	Non Low-E Vinyl Window – No Grids	•	
8' Sidewalls with Flat Textured Ceiling	•	•	Low-E Gridded Vinyl Windows		•
2x6 Sidewalls 16" O.C.		•	100 Amp (Single-Section) 200 Amp (Multi-Section)	•	•
20# Roof Load	•	•	Exterior GFI	•	•
Nominal 3/12 Roof Pitch	•	•	Metal Furnace Door		•
3-Tab Shingled Roof	•	•	Thermostat	•	
Dutchlap Siding	•	•	Programable Thermostat		•
Shutters on Front Door Side (Multi-Section Only)	•	•	Smoke Detector – Per Code	•	•
Vented Closet Shelves	•	•	White Exterior Lights		•
056A Gas Furnace		•	(1) Bulb Light Fixtures	•	•
15kw Electric Furnace	•	•	Switched Receptacles in Living Room & Bedrooms	•	•
Inline Heat Registers	•	•	60" 1-Piece Tub	•	•
Thermo-Brace [®] (OPT. 7/16 OSB Backer)		•	Stainless Steel Sink	•	
Tape & Texture Drywall Throughout		•	Round Front Toilet	•	•
Raised Panel Shutters		•	Bath Vanity Mirrors	•	•
2-5/8" Ceiling Cove 2-3/4" Base 2" Interior Trim		•	Vent Fan Without Light	•	•
30-Gallon Water Heater	•	•	Wood Shaker Cabinets – Hardwood Stile		•
Plumb for Washer / Wire for Dryer	•	•	MDF Shaker Cabinets with MDF Stile No Hardware	•	
Linoleum Throughout (Single-Sections)	•	•	Bank of Drawers at Kitchen	•	•
Electric Range	•		Factory Select Interior Colors	•	
Self-Clean Gas Range		•	36" Vanity Height - Porcelain Sinks		•
Range Hood	•	•	8" Stainless Steel Sink		•
18 Cu. Ft. Refrigerator	•	•	Adjustable Overhead Shelf		•

FOUNDATIONS

34826-52'

3 bed-2 bath
1387 sq. ft.

ATLANTIC[®]
HOMES



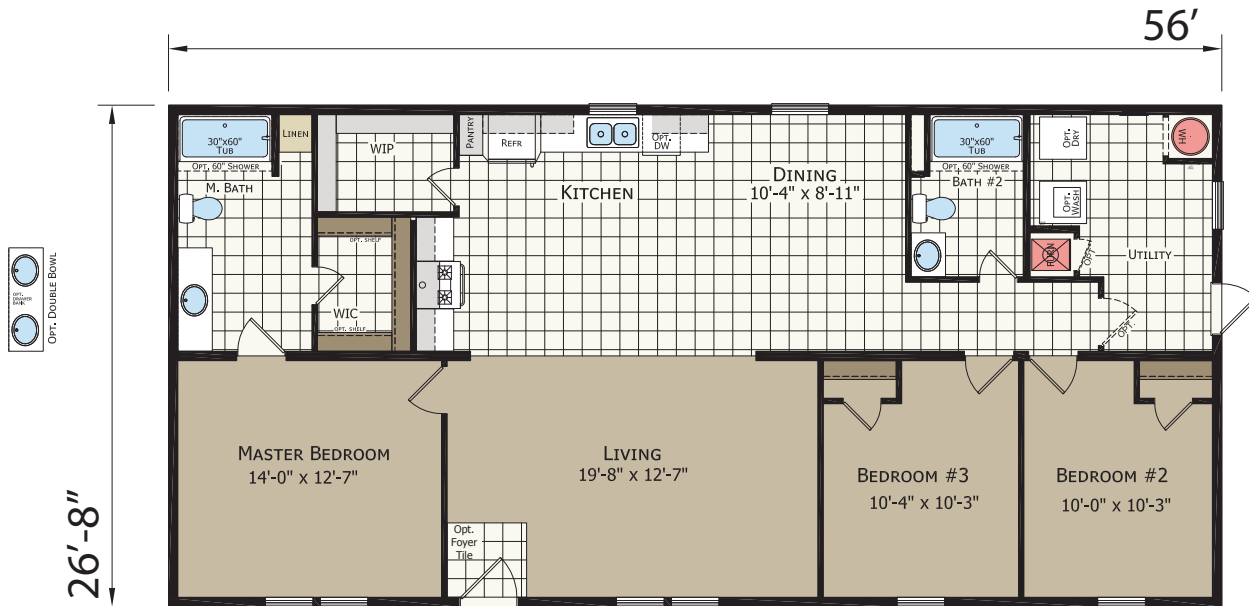
STANDARD FEATURES	VOG	Drywall		VOG	Drywall
2x4 Exterior Wall with R-11	•		6-Panel Steel Front Door	•	
I-Beam with Removable Hitch	•	•	Sunburst Fiberglass Front Door		•
2x6 Floor Joist 16" O.C.	•	•	9-Lite Rear Door	•	•
R-11 Floor / R-22 Roof Insulation	•	•	2-Panel Arch Top Interior Doors with Knobs	•	•
Tongue & Groove OSB Floor Decking	•	•	Non Low-E Vinyl Window – No Grids	•	
8' Sidewalls with Flat Textured Ceiling	•	•	Low-E Gridded Vinyl Windows		•
2x6 Sidewalls 16" O.C.		•	100 Amp (Single-Section) 200 Amp (Multi-Section)	•	•
20# Roof Load	•	•	Exterior GFI	•	•
Nominal 3/12 Roof Pitch	•	•	Metal Furnace Door		•
3-Tab Shingled Roof	•	•	Thermostat	•	
Dutchlap Siding	•	•	Programable Thermostat		•
Shutters on Front Door Side (Multi-Section Only)	•	•	Smoke Detector – Per Code	•	•
Vented Closet Shelves	•	•	White Exterior Lights		•
056A Gas Furnace		•	(1) Bulb Light Fixtures	•	•
15kw Electric Furnace	•		Switched Receptacles in Living Room & Bedrooms	•	•
Inline Heat Registers	•	•	60" 1-Piece Tub	•	•
Thermo-Brace [®] (OPT. 7/16 OSB Backer)		•	Stainless Steel Sink	•	
Tape & Texture Drywall Throughout		•	Round Front Toilet	•	•
Raised Panel Shutters		•	Bath Vanity Mirrors	•	•
2-5/8" Ceiling Cove 2-3/4" Base 2" Interior Trim		•	Vent Fan Without Light	•	•
30-Gallon Water Heater	•	•	Wood Shaker Cabinets – Hardwood Stile		•
Plumb for Washer / Wire for Dryer	•	•	MDF Shaker Cabinets with MDF Stile No Hardware	•	
Linoleum Throughout (Single-Sections)	•	•	Bank of Drawers at Kitchen	•	•
Electric Range	•		Factory Select Interior Colors	•	
Self-Clean Gas Range		•	36" Vanity Height - Porcelain Sinks		•
Range Hood	•	•	8" Stainless Steel Sink		•
18 Cu. Ft. Refrigerator	•	•	Adjustable Overhead Shelf		•

FOUNDATIONS

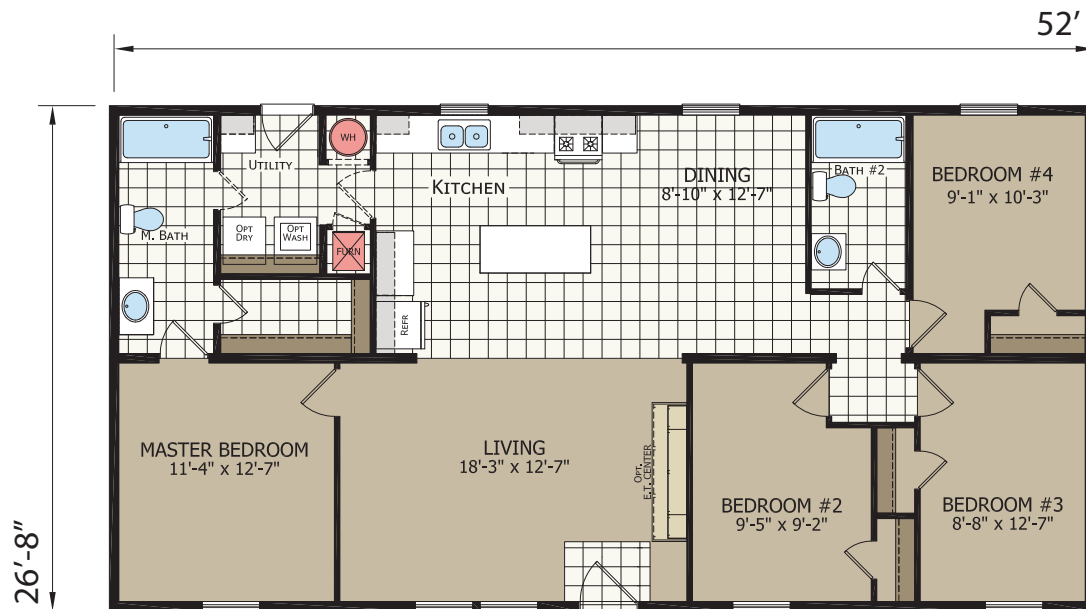
34826-56'

3 bed-2 bath
1493 sq. ft.

ATLANTIC[®]
HOMES



STANDARD FEATURES	VOG	Drywall		VOG	Drywall
2x4 Exterior Wall with R-11	•		6-Panel Steel Front Door	•	
I-Beam with Removable Hitch	•	•	Sunburst Fiberglass Front Door		•
2x6 Floor Joist 16" O.C.	•	•	9-Lite Rear Door	•	•
R-11 Floor / R-22 Roof Insulation	•	•	2-Panel Arch Top Interior Doors with Knobs	•	•
Tongue & Groove OSB Floor Decking	•	•	Non Low-E Vinyl Window – No Grids	•	
8' Sidewalls with Flat Textured Ceiling	•	•	Low-E Gridded Vinyl Windows		•
2x6 Sidewalls 16" O.C.		•	100 Amp (Single-Section) 200 Amp (Multi-Section)	•	•
20# Roof Load	•	•	Exterior GFI	•	•
Nominal 3/12 Roof Pitch	•	•	Metal Furnace Door		•
3-Tab Shingled Roof	•	•	Thermostat	•	
Dutchlap Siding	•	•	Programable Thermostat		•
Shutters on Front Door Side (Multi-Section Only)	•	•	Smoke Detector – Per Code	•	•
Vented Closet Shelves	•	•	White Exterior Lights		•
056A Gas Furnace		•	(1) Bulb Light Fixtures	•	•
15kw Electric Furnace	•		Switched Receptacles in Living Room & Bedrooms	•	•
Inline Heat Registers	•	•	60" 1-Piece Tub	•	•
Thermo-Brace [®] (OPT. 7/16 OSB Backer)		•	Stainless Steel Sink	•	
Tape & Texture Drywall Throughout		•	Round Front Toilet	•	•
Raised Panel Shutters		•	Bath Vanity Mirrors	•	•
2-5/8" Ceiling Cove 2-3/4" Base 2" Interior Trim		•	Vent Fan Without Light	•	•
30-Gallon Water Heater	•	•	Wood Shaker Cabinets – Hardwood Stile		•
Plumb for Washer / Wire for Dryer	•	•	MDF Shaker Cabinets with MDF Stile No Hardware	•	
Linoleum Throughout (Single-Sections)	•	•	Bank of Drawers at Kitchen	•	•
Electric Range	•		Factory Select Interior Colors	•	
Self-Clean Gas Range		•	36" Vanity Height - Porcelain Sinks		•
Range Hood	•	•	8" Stainless Steel Sink		•
18 Cu. Ft. Refrigerator	•	•	Adjustable Overhead Shelf		•



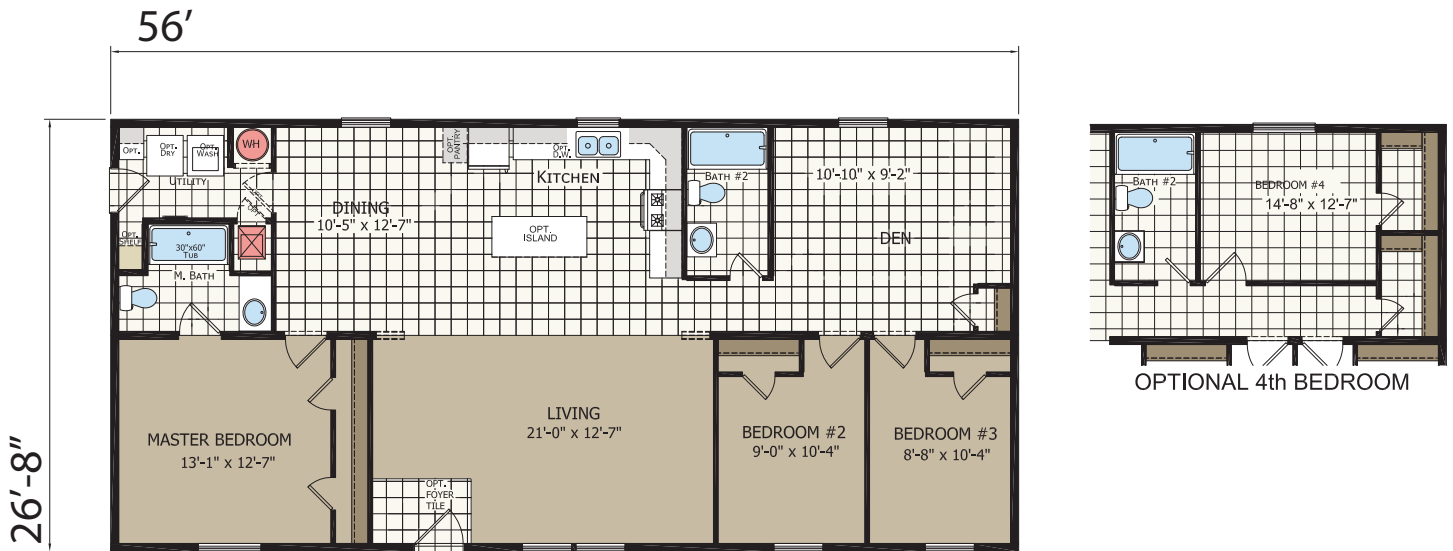
STANDARD FEATURES	VOG	Drywall		VOG	Drywall
2x4 Exterior Wall with R-11	•		6-Panel Steel Front Door	•	
I-Beam with Removable Hitch	•	•	Sunburst Fiberglass Front Door		•
2x6 Floor Joist 16" O.C.	•	•	9-Lite Rear Door	•	•
R-11 Floor / R-22 Roof Insulation	•	•	2-Panel Arch Top Interior Doors with Knobs	•	•
Tongue & Groove OSB Floor Decking	•	•	Non Low-E Vinyl Window – No Grids	•	
8' Sidewalls with Flat Textured Ceiling	•	•	Low-E Gridded Vinyl Windows		•
2x6 Sidewalls 16" O.C.		•	100 Amp (Single-Section) 200 Amp (Multi-Section)	•	•
20# Roof Load	•	•	Exterior GFI	•	•
Nominal 3/12 Roof Pitch	•	•	Metal Furnace Door		•
3-Tab Shingled Roof	•	•	Thermostat	•	
Dutchlap Siding	•	•	Programable Thermostat		•
Shutters on Front Door Side (Multi-Section Only)	•	•	Smoke Detector – Per Code	•	•
Vented Closet Shelves	•	•	White Exterior Lights		•
056A Gas Furnace		•	(1) Bulb Light Fixtures	•	•
15kw Electric Furnace	•		Switched Receptacles in Living Room & Bedrooms	•	•
Inline Heat Registers	•	•	60" 1-Piece Tub	•	•
Thermo-Brace [®] (OPT. 7/16 OSB Backer)		•	Stainless Steel Sink	•	
Tape & Texture Drywall Throughout		•	Round Front Toilet	•	•
Raised Panel Shutters		•	Bath Vanity Mirrors	•	•
2-5/8" Ceiling Cove 2-3/4" Base 2" Interior Trim		•	Vent Fan Without Light	•	•
30-Gallon Water Heater	•	•	Wood Shaker Cabinets – Hardwood Stile		•
Plumb for Washer / Wire for Dryer	•	•	MDF Shaker Cabinets with MDF Stile No Hardware	•	
Linoleum Throughout (Single-Sections)	•	•	Bank of Drawers at Kitchen	•	•
Electric Range	•		Factory Select Interior Colors	•	
Self-Clean Gas Range		•	36" Vanity Height - Porcelain Sinks		•
Range Hood	•	•	8" Stainless Steel Sink		•
18 Cu. Ft. Refrigerator	•	•	Adjustable Overhead Shelf		•

FOUNDATIONS

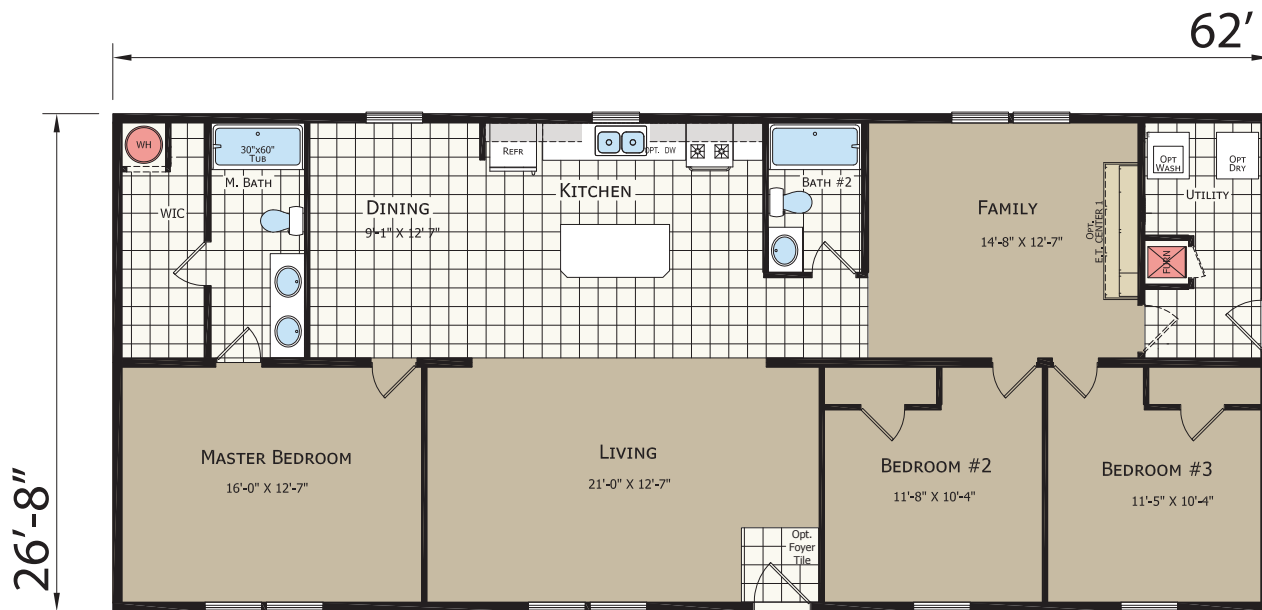
35626

3 or 4 bed-2 bath
1493 sq. ft.

ATLANTIC[®]
HOMES



STANDARD FEATURES	VOG	Drywall		VOG	Drywall
2x4 Exterior Wall with R-11	•		6-Panel Steel Front Door	•	
I-Beam with Removable Hitch	•	•	Sunburst Fiberglass Front Door		•
2x6 Floor Joist 16" O.C.	•	•	9-Lite Rear Door	•	•
R-11 Floor / R-22 Roof Insulation	•	•	2-Panel Arch Top Interior Doors with Knobs	•	•
Tongue & Groove OSB Floor Decking	•	•	Non Low-E Vinyl Window – No Grids	•	
8' Sidewalls with Flat Textured Ceiling	•	•	Low-E Gridded Vinyl Windows		•
2x6 Sidewalls 16" O.C.		•	100 Amp (Single-Section) 200 Amp (Multi-Section)	•	•
20# Roof Load	•	•	Exterior GFI	•	•
Nominal 3/12 Roof Pitch	•	•	Metal Furnace Door		•
3-Tab Shingled Roof	•	•	Thermostat	•	
Dutchlap Siding	•	•	Programable Thermostat		•
Shutters on Front Door Side (Multi-Section Only)	•	•	Smoke Detector – Per Code	•	•
Vented Closet Shelves	•	•	White Exterior Lights		•
056A Gas Furnace		•	(1) Bulb Light Fixtures	•	•
15kw Electric Furnace	•	•	Switched Receptacles in Living Room & Bedrooms	•	•
Inline Heat Registers	•	•	60" 1-Piece Tub	•	•
Thermo-Brace [®] (OPT. 7/16 OSB Backer)		•	Stainless Steel Sink	•	
Tape & Texture Drywall Throughout		•	Round Front Toilet	•	•
Raised Panel Shutters		•	Bath Vanity Mirrors	•	•
2-5/8" Ceiling Cove 2-3/4" Base 2" Interior Trim		•	Vent Fan Without Light	•	•
30-Gallon Water Heater	•	•	Wood Shaker Cabinets – Hardwood Stile		•
Plumb for Washer / Wire for Dryer	•	•	MDF Shaker Cabinets with MDF Stile No Hardware	•	
Linoleum Throughout (Single-Sections)	•	•	Bank of Drawers at Kitchen	•	•
Electric Range	•		Factory Select Interior Colors	•	
Self-Clean Gas Range		•	36" Vanity Height - Porcelain Sinks		•
Range Hood	•	•	8" Stainless Steel Sink		•
18 Cu. Ft. Refrigerator	•	•	Adjustable Overhead Shelf		•



STANDARD FEATURES	VOG	Drywall		VOG	Drywall
2x4 Exterior Wall with R-11	•		6-Panel Steel Front Door	•	
I-Beam with Removable Hitch	•	•	Sunburst Fiberglass Front Door		•
2x6 Floor Joist 16" O.C.	•	•	9-Lite Rear Door	•	•
R-11 Floor / R-22 Roof Insulation	•	•	2-Panel Arch Top Interior Doors with Knobs	•	•
Tongue & Groove OSB Floor Decking	•	•	Non Low-E Vinyl Window – No Grids	•	
8' Sidewalls with Flat Textured Ceiling	•	•	Low-E Gridded Vinyl Windows		•
2x6 Sidewalls 16" O.C.		•	100 Amp (Single-Section) 200 Amp (Multi-Section)	•	•
20# Roof Load	•	•	Exterior GFI	•	•
Nominal 3/12 Roof Pitch	•	•	Metal Furnace Door		•
3-Tab Shingled Roof	•	•	Thermostat	•	
Dutchlap Siding	•	•	Programable Thermostat		•
Shutters on Front Door Side (Multi-Section Only)	•	•	Smoke Detector – Per Code	•	•
Vented Closet Shelves	•	•	White Exterior Lights		•
056A Gas Furnace		•	(1) Bulb Light Fixtures	•	•
15kw Electric Furnace	•		Switched Receptacles in Living Room & Bedrooms	•	•
Inline Heat Registers	•	•	60" 1-Piece Tub	•	•
Thermo-Brace [®] (OPT. 7/16 OSB Backer)		•	Stainless Steel Sink	•	
Tape & Texture Drywall Throughout		•	Round Front Toilet	•	•
Raised Panel Shutters		•	Bath Vanity Mirrors	•	•
2-5/8" Ceiling Cove 2-3/4" Base 2" Interior Trim		•	Vent Fan Without Light	•	•
30-Gallon Water Heater	•	•	Wood Shaker Cabinets – Hardwood Stile		•
Plumb for Washer / Wire for Dryer	•	•	MDF Shaker Cabinets with MDF Stile No Hardware	•	
Linoleum Throughout (Single-Sections)	•	•	Bank of Drawers at Kitchen	•	•
Electric Range	•		Factory Select Interior Colors	•	
Self-Clean Gas Range		•	36" Vanity Height - Porcelain Sinks		•
Range Hood	•	•	8" Stainless Steel Sink		•
18 Cu. Ft. Refrigerator	•	•	Adjustable Overhead Shelf		•

- 2x6 Walls with R-19
- 30# Roof – Exchange 20#
- OSB Sheathing with House Wrap
- House Wrap
- 086 Oil Furnace
- 086 Gas Furnace
- 056 Gas Furnace
- 40-Gallon Water Heater
- Dishwasher
- Washer Installed
- Electric Dryer Installed
- Gas Range
- 200 Amp (Single-Section)
- Furnace Door
- 9-Lite Door – Exchange Blank (Requires 2x6 Walls)
- Shutters
- Pier Saver
- R-22 Floor Insulation
- R-30 Roof Insulation
- Programmable Thermostat
- Perimeter OSB Skirting
- Foyer Entry
- 1- Bulb Bedroom Light
- 1-Piece Tub
- Porcelain Sink
- Whole House Shut-Off
- Shut-Off Valves Throughout
- Carpet Per Sq. Ft. – Exchange Lino
- Wire Shelf Over Washer/Dryer
- Shelf Over Refrigerator
- CO² Detectors
- Formica[®] Backsplash Per LF
- Feature Walls
- Lined Shelving at Cabinets (Replaces any OSB in Cabinets)
- 30" Interior Door – Exchange 24" Door
- 60" Shower – Exchange Tub (Where Applicable)
- Exterior Water Faucet
- 10" I-beam – Exchange 8" (Forced in Some Cases)
- Additional Axle (Forced in Some Cases)
- Raised Bathroom Vanity
- Cottage Door – Exchange Blank
- Brake – Exchange Idler
- 100 Amp – Exchange 200 Amp
- Center Shelf Base Cabinet
- Optional Interior Door
- Furnace Stack Extension
- Additional Window (At Optional Areas on Print Only)
- Guest or Linen Closet (At Optional Areas on Print Only)
- Plumb for Gas Dryer
- 12" I-beam – Exchange 10" (Forced in Some Cases)

VIEW ALL OF OUR FLOOR PLANS
atlantichomespa.com